



KING'S HARBOUR MASTER CLYDE

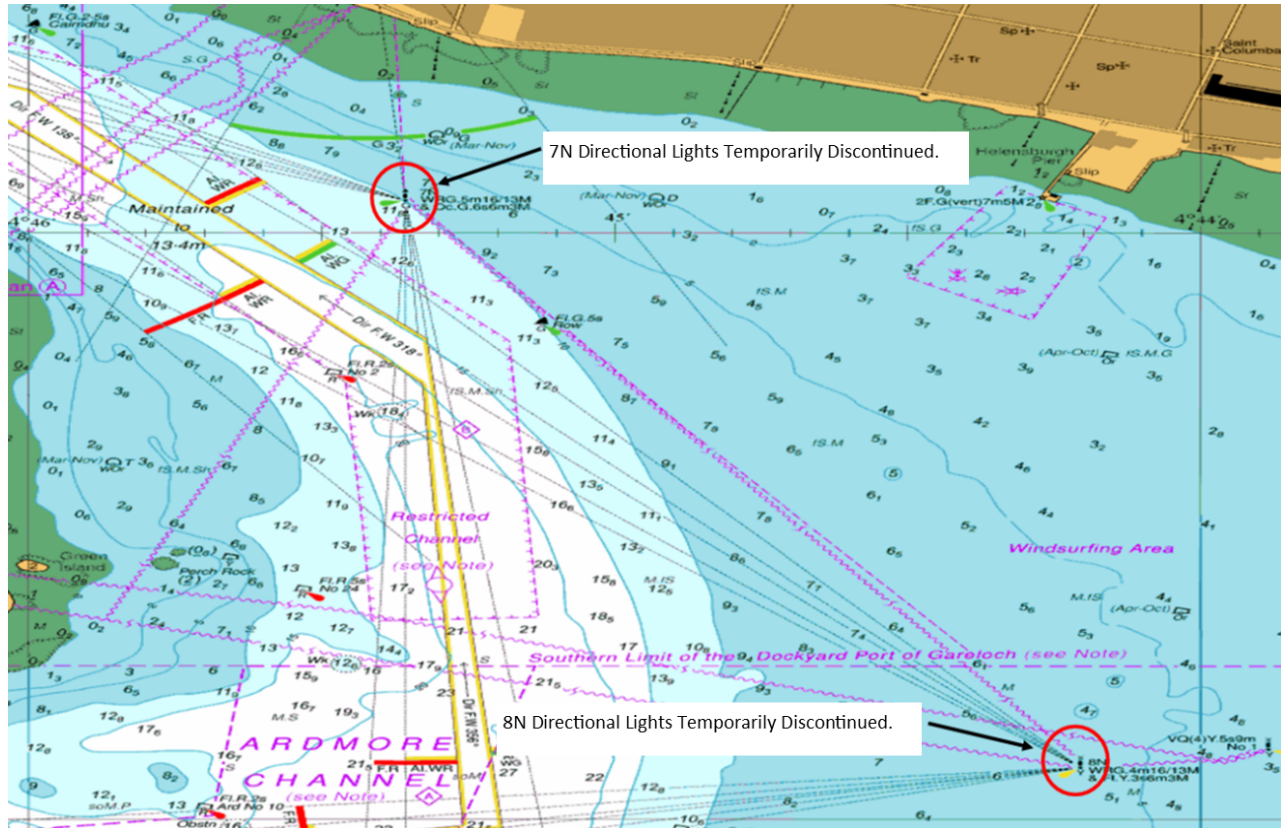
LNTM No 08/24

GARELOCH - 7N & 8N BEACONS TEMPORARILY DISCONTINUED

Notice

1. Mariners are advised that the power to the 7N & 8N directional lights have been isolated, due to a catastrophic failure of a sub-sea power cable and they are now temporarily discontinued while a phased solution is being worked on to bring the lights back into service.

2. Please see below chart extract showing 7N & 8N Directional Lights.



3. The passing lights which mark both of these structures are still operational. Please see below light characters:

7N: Oc.G.6s 6m 3M

8N: Fl.Y.3s 6m 3M

4. Mariners are to navigate with caution when transiting in this area.

5. Further notice will be provided in due course.

6. Next LNTM 09/24.

7. The following KHM Clyde Local Notices to Mariners remain in force at the time of publication: 01/24, 02/24, 03/24, 04/24, 05/24, 06/24, 07/24

Wednesday 10 Jan 2024

Ian White
King's Harbour Master Clyde